

Health Equity, Outreach and Consumer Experience Advisory Committee

September 22, 2022



Agenda

Mission and Vision	4
Health Disparities Research	5–6
New Focus on Health Equity	7–8
What we have accomplished	9
Initiatives	10
The Committee	11
ECP, PHE, Covered CT Updates	12–14
Q&A and Future Meetings	15–16





Public Comment

About Access Health

Connecting You to Quality Health Insurance Plans

Access Health CT is Connecticut's official health insurance marketplace, where you can shop, compare and enroll in quality healthcare plans; and it is the only place where you can qualify for financial health to lower your costs, or be eligible for free or low-cost coverage through Medicaid/HUSKY.

Vision

"Provide Connecticut residents with access to the most equitable, simple and affordable health insurance products to foster healthier communities"

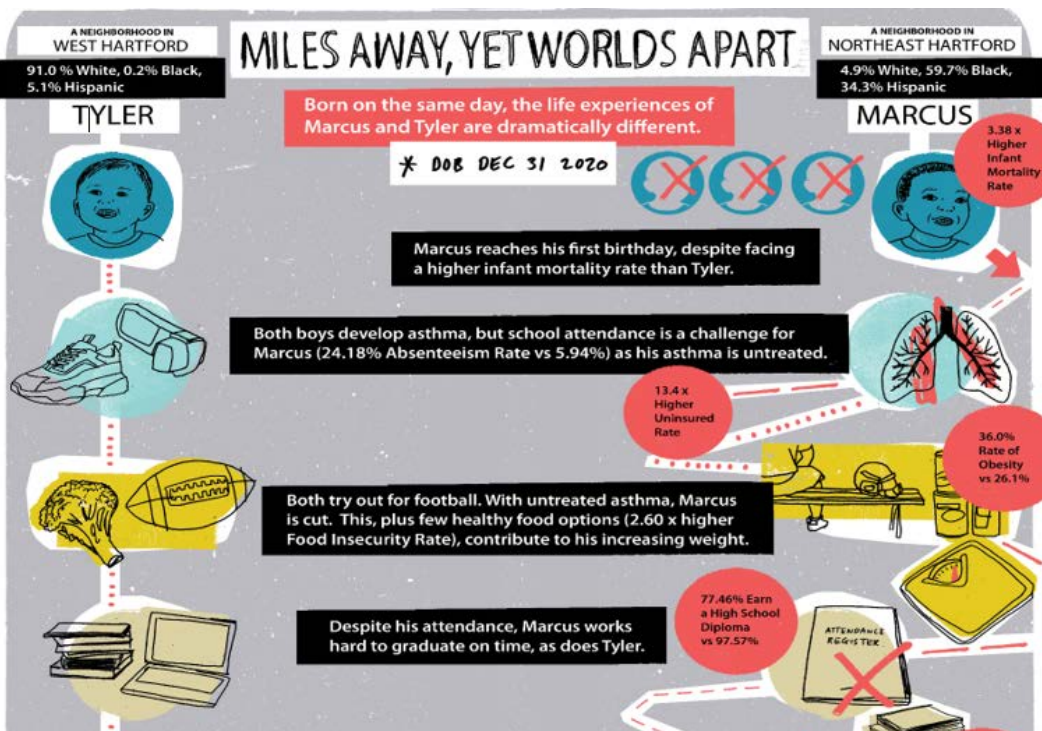
Mission

"To decrease the number of uninsured residents, improve the quality of healthcare, and reduce health disparities through an innovative, competitive marketplace that empowers consumers to choose the health coverage that give them the best value"



The Results

Despite our Connecticut high ranking in life expectancy compared to other states, significant health and income disparities exist.



We are Committed



The launch of the Office of Health Equity and Outreach, a department tasked with driving equity in access and delivery of health care.

New Webpage

Increase the number of insured residents, improve health care quality, lower costs and **reduce health disparities** using **digital destination** – an innovative, competitive marketplace that empowers consumers to choose the health plan and provider that give them the best value.



Health Equity and Outreach



Continue to support and promote initiatives aimed at reducing health disparities i.e. The Broker Academy.



Conducting more targeted outreach to expand partnerships that provide healthcare services, assistance, and information to underserved groups and individuals.

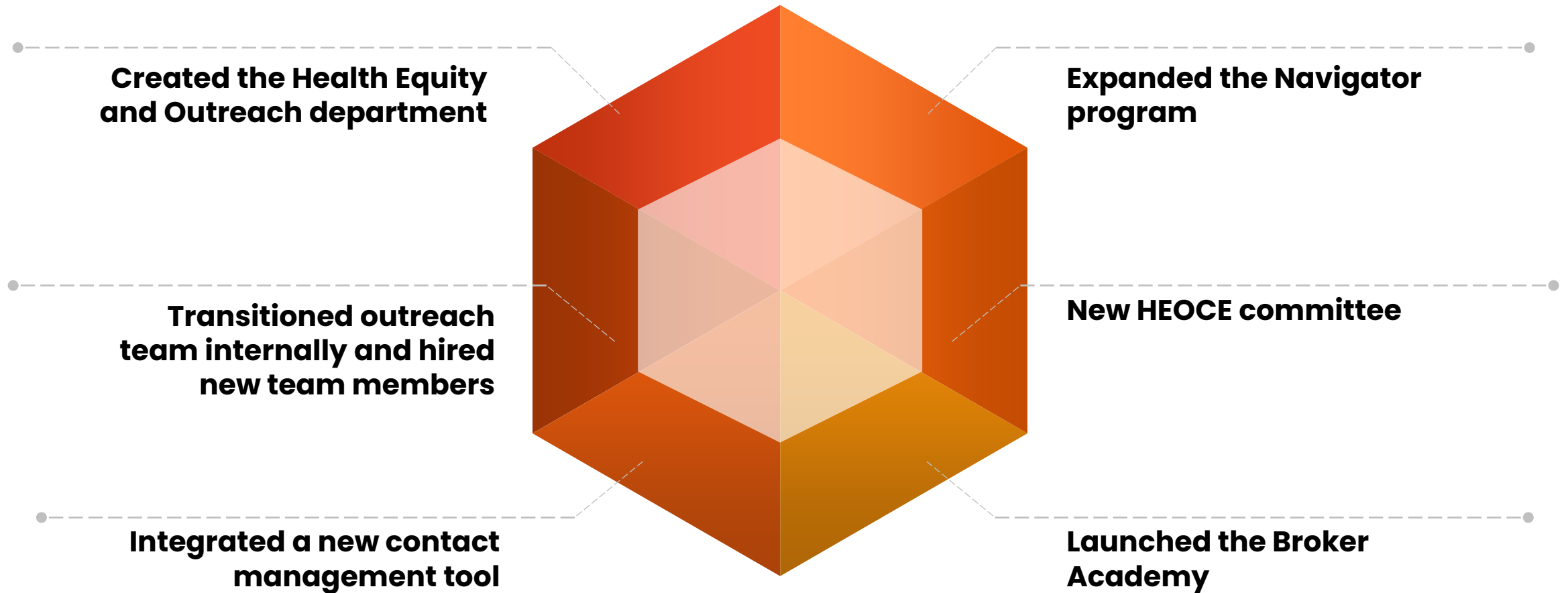


Promote CAC training to qualified organizations, hospitals, and health centers to ensure proper CAC coverage throughout the state.



Update the new Health Equity and Enrollment event webpage and make it more engaging and educational for consumers and community partners.

What we've accomplished



The Broker Academy



The Program will create a pathway to license brokers by recruiting from, and building the skillsets of, those who live and work in underserved communities throughout Connecticut.

By activating members of these communities to become licensed brokers, AHCT can build trust and rapport by meeting members of the community where they are.

The objective is to reduce the uninsured rate and address health disparities in the State of Connecticut.



More diversified
Broker
community



Provide access in
underserved
areas

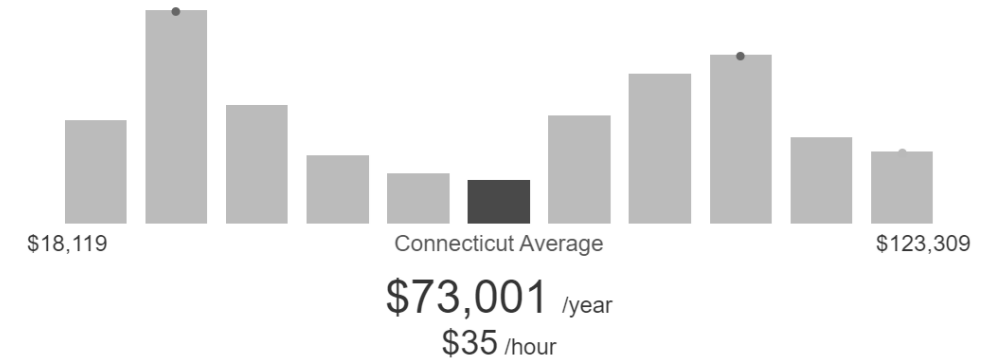


Economic
benefits to
students and
communities

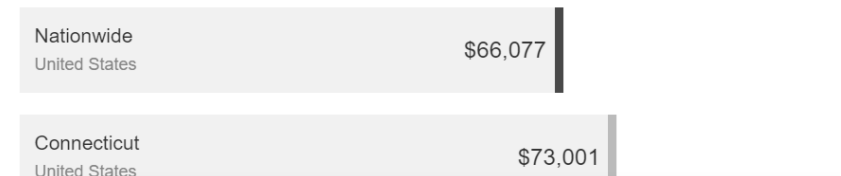
HEALTH INSURANCE BROKER

Salary

Jobs



Health Insurance Broker Salary in Connecticut Comparison by Location



| Committee goals



Improve consumer access to health insurance

Reduce the rate of the uninsured and health disparities



Expanding Community partnerships

Building relationships and partnerships



Outreach Efforts

Increasing outreach opportunities and state-wide collaborations

Essential Community Providers

An essential community provider (ECP) serves predominantly low-income, medically underserved individuals, and includes Federally Qualified Health Centers (FQHC) as ECPs



The ACA requires issuers to meet specific standards for network adequacy by including Essential Community Providers (ECPs) within their QHP provider networks

AHCT's ECP standard is to contract with

50% of the FQHCs

50% of the Non-FQHC providers on the AHCT ECP list.

Public Health Emergency (PHE) Update

Nearly 390k enrollees currently benefit from extended HUSKY coverage

HHS is expected to announce a PHE renewal in October 2022

PHE renewal periods have historically been 90-day extensions



AHCT continues to delay action on open verification requirements for QHP customers for the duration of the PHE

Preparation for the eventual end of the PHE is well underway.
Coordination with DSS includes:

Reverting eligibility/enrollment requirements to pre-PHE thresholds/configurations

Planning unwind schedule, enrollment volume, and renewal rules

Communication strategy and coordination with internal/external stakeholders

Operational readiness for increased customer support

Covered Connecticut Program

No-cost health insurance for adults who are ineligible for Medicaid due to income and have annual income up to 175% of the Federal Poverty Level (FPL)

Covers consumer portion of premium after APTCs under ACA, and consumer cost-sharing amounts under a Qualified Health Plan

Program also provides dental and non-emergency medical transportation benefits

Enrollment through Access Health CT, program administered by Dept. of Social Services

Created in 2021 through Public Act 21-2



Q&A

A background image showing four people (two men and two women) sitting on a grassy field, smiling and looking towards each other. The image is overlaid with a semi-transparent orange filter. The title text is centered over the middle of the image.

Future Meeting Cadence

A background image showing four people (two men and two women) sitting on a grassy field, smiling and looking towards each other. The image is overlaid with a semi-transparent orange filter. The word "Adjournment" is centered in white text.

Adjournment